

CEO Diane Berweger, left, and Board President Mark Santikko addressed the members who tuned in via Zoom for Bayfield Electric Cooperative's annual meeting.

80TH YEAR ANNUAL MEETING LOOKED A LITTLE DIFFERENT

Nothing is ordinary this year due to the COVID-19 pandemic, including our annual meeting. On Monday, June 15, at 6 p.m., Bayfield Electric held its 80th year annual meeting VIRTUALLY via Zoom. Instead of having a crowded community center filled with people, there were only a handful of people within the same building. Members followed along and were able to ask questions or offer comments.

Given the circumstances, we're pleased with the results. Thank goodness for technology, which enabled us to hold an annual meeting for this year. We look forward to hopefully being able to see members in person again at next year's annual meeting.

Board Meeting Highlights

A regular meeting of the Board of Directors of Bayfield Electric Cooperative was held on July 1, 2020, at 10 a.m. The following is a summary of the meeting activities.

- **The safety message** to stay hydrated and avoid heat stroke was shared.
- **The minutes of the June 2020 meeting**, Audit Committee report, CEO and board expenses, as well as financial and system reports were all approved.
- **Policies 500.1-500.4** were updated regarding the Board of Director responsibilities.
- **The 2020 Virtual Annual Meeting Discussion** concerning net metering was discussed.

Meeting adjourned at 11:59 a.m.

A note from a thankful member:

JUN 25 2020

To Whom It might concern, June 21, 2020

A little over a week ago I arrived at my cabin and found I had no 220 power, no kitchen stove, hot water, heat and so on. After doing a little investigation I decided it was maybe the meter and called it in to Bayfield Electric.

Within an hour Ken arrived, he is definitely the kind of employee you want to keep no matter what. He was so polite and after I fumbled around trying to explain what I thought was wrong and so on, Ken very graciously did some testing and then started walking under the wires. It did not take him 3 or 4 minutes and he found a tree that had worn right through one of the black 110 wires. He said do not worry he will have it fixed in no time.

I was most impressed with him; he did not try to over power the conversation with his knowledge or my lack of knowledge of this problem. He just got to work and fixed our problem saving the weekend at the cabin. He told me he was coming from Cable, and lived over near Copper Falls State Park near Mellon and Clam Lake was not a long run for him.

It is great that you are able to have such qualified people like Ken to help us out. Thank you.

Sincerely

Tim Gapen

MY CO-OP



EQUIPMENT USED TO BURY WIRE HAS COME A LONG WAY OVER THE YEARS!

LIGHTNING SAFETY should be practiced every time it storms



**ALWAYS
ASSUME DOWN WIRES
ARE LIVE!**

**Do not touch or try to remove
trees on your own, that's
what our line workers are
trained to do.**

Summer is peak season for one of the nation's deadliest weather phenomena—lightning. Lightning strikes year-round. Don't be fooled by blue skies. If you hear thunder, lightning is close enough to pose an immediate threat. That is why the National Weather Service has adopted the saying: When Thunder Roars, Go Indoors!

As part of its Teach Learn Care TLC campaign, Safe Electricity urges parents and other caregivers to make sure children also understand the importance of lightning awareness and how to stay safe.

Lightning can strike up to 10 miles from the area in which it is raining, even if you don't see clouds. This means that if you can hear thunder, you're within striking distance.

A good idea is to use the "30-30 Rule." According to this rule, if you count fewer than 30 seconds between a lightning flash and the thunder following it, you should seek shelter from the storm. A smart thing to do is count your 30 seconds inside away from all threatening weather. When the storm is over, wait 30 minutes after the last lightning strike you see

before going back outside.

If caught outdoors during a thunderstorm and unable to take shelter in a building, take the following precautions:

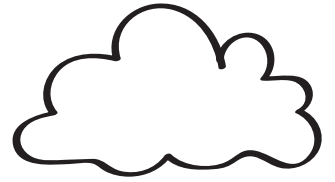
- Try to take shelter in a vehicle with a solid metal roof. Close the windows and avoid contact with electrical conducting paths, such as the steering wheel, ignition, gear shifter, or radio.
- Avoid water, high ground, or open spaces.
- Do not seek shelter under tall, solitary trees; canopies; small picnic or rain shelters; or in any open-frame vehicles such as jeeps, convertibles, golf carts, tractors, or mowers.
- Do not stand near power, light or flag poles, machinery, fences, gates, metal bleachers, or even other people. If you are in a group, spread out so that you are at least 20 feet apart.
- If your skin tingles or your hair stands on end, lightning may be about to strike. Squat down low to the ground with your head between your knees, making yourself the smallest target possible.

Phone use is the leading cause of indoor lightning injuries in the United States. A direct strike is not necessary for lightning voltage to enter your home through phone lines, electrical wires, cables, and plumbing. Other recommendations to avoid lightning shock and damage include:

- Turn off and unplug appliances well before a storm nears—never during. Don't expect a surge protector to save appliances from a lightning strike; unplug it as well.
 - Stay away from electrical outlets, appliances, computers, power tools, and TV sets. Take off headsets and stop playing video games.
 - Turn off your air conditioner to protect the compressor from a power surge and avoid a costly repair job.
 - Avoid water and contact with piping, including sinks, baths, and faucets. Don't wash dishes, shower, or bathe during a thunderstorm. Also avoid washers and dryers since they not only connect with the plumbing and electrical systems, but also contain an electrical path from the outside through the dryer vent.
- Do not lie on the concrete floor of a garage, as it likely contains a wire mesh.
- Basements typically are a safe place to go during thunderstorms, but avoid concrete walls that may contain metal rebar.

Don't forget your pets. Dog houses are not lightning-safe and dogs chained to trees can easily fall victim to a strike. If a person is struck by lightning, call 9-1-1 and care for the victim immediately. You are not in danger of being electrocuted by the victim. More information can be found at the National Oceanic and Atmospheric Administration website at www.lightningsafety.noaa.gov.—Source: safeelectricity.org

LIGHTNING



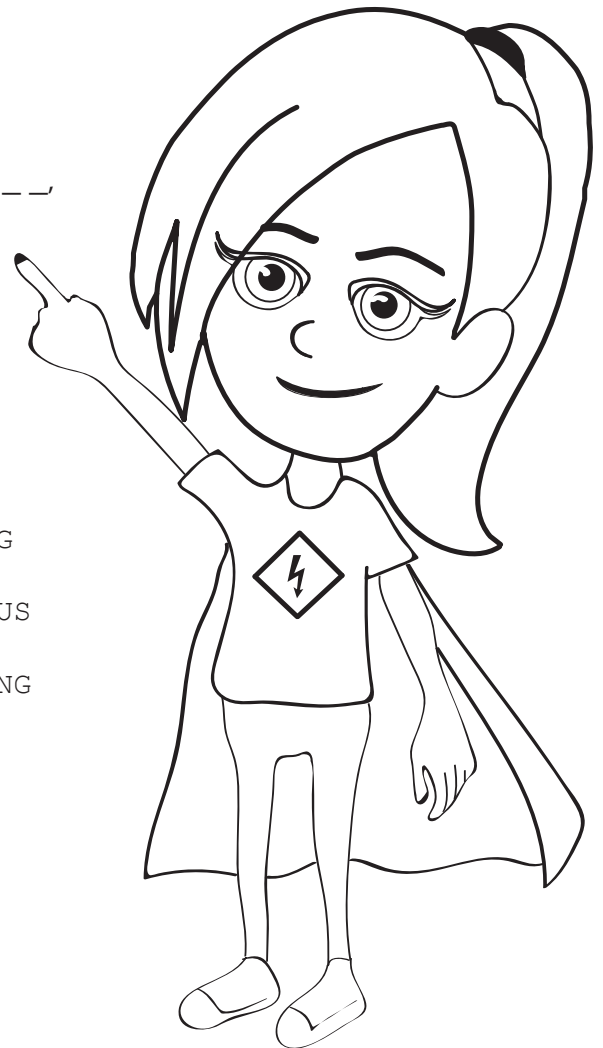
SAFETY

with
Safety Sadie

Did you know _____ can _____ from up to 15 miles away? It is _____ to be outside during a _____. A good rule to remember is "When _____ roars go _____." Go inside a house or a _____ or a hard top _____. Never seek shelter under a _____ or pavilion. Wait at least 30 _____ after the last roar of thunder to head _____.

S E T U N I M T C E B X Y I I
 Z K I I P M I H E A D X O N K
 G I U K N A F U G D R Y D Q Z
 S R L H S Q S N S Z I O S I V
 C T Y Z Y R I D S N O S G K Z
 S S B W E N Z E R R Q B T J O
 Q Q G U T N G R S P J G U U X
 T M K H I K P W L X M M P P O
 L W G M Y L Z X Y H R T R E E
 C I M R V E D G J O C T P J C
 L Y W G P K Y I T Z W J X V O
 Z D C V W P Q S N S Y G Z U P
 D A N G E R O U S G Z G C V K
 A D Z G N L P Z F F G I G A G
 M S C W H P T I U J W Z Z P Y

BUILDING
 CAR
 DANGEROUS
 INDOORS
 LIGHTNING
 MINUTES
 OUTSIDE
 STORM
 STRIKE
 THUNDER
 TREE



MY CO-OP

For more information, visit:





HOW DO WE CONTACT YOU?

Every now and then we may need to contact you whether it's because we have a billing question, we have to take your electrical service out of power for a maintenance reason, or we just simply have a question regarding your account. We have a handful of phone numbers on file that bounce back as disconnected, changed, or it's altogether the wrong person.

We list your phone number that we have on file on the bottom third of your electric bill. Please take a moment to verify that the number we have on file is still the best contact number to reach you. If it is not the correct number, you can make the correction on the stub and just mail it in with your monthly payment. Or you can always call the office at 715-372-4287 to notify us of a change.

Please make sure your email is up to date or on file as well. This has become a great form of communication between the cooperative and our members!

If you utilize SmartHub, you can also change your contact information through the app or desktop site.



TRIMMED TREES = BETTER SERVICE

When you see us trimming trees near power lines, know that we are doing so because:

- Tree and foliage overgrowth can interfere with power distribution.
- Power lines can give off a spark or arc that may land on a nearby branch and ignite.
- The lights in your house may flicker when tree branches brush power lines during high winds.
- Stormy weather can cause nearby limbs to break off and land on power lines.
- Unobstructed power lines make it easier and safer for line workers to maintain equipment and restore power.

Energy Efficiency Tip of the Month

Installing a smart power strip is a quick and easy way to start saving money while making your home more energy efficient. Smart power strips can actually cut power off to save energy since they are able to detect when a device is in standby mode.

Source: energy.gov



MONTH OF AUGUST

Billing date: August 10, 2020

July USAGE

Bills due upon receipt

GROSS DUE AFTER August 31, 2020

Disconnect: August 13, 2020

Diane Berweger, CEO

68460 District St., P.O. Box 68, Iron River, WI 54847
715-372-4287 • Fax: 715-372-4318


www.bayfeldelectric.com

Payment by Phone: 855-385-9978
After Hours Outage: 715-372-4047

Briana Green, Editor



Bayfield Electric Cooperative

Your Touchstone Energy® Cooperative 

Office Hours: 7:30 a.m.–4:00 p.m., Monday–Friday
This institution is an equal opportunity provider and employer.